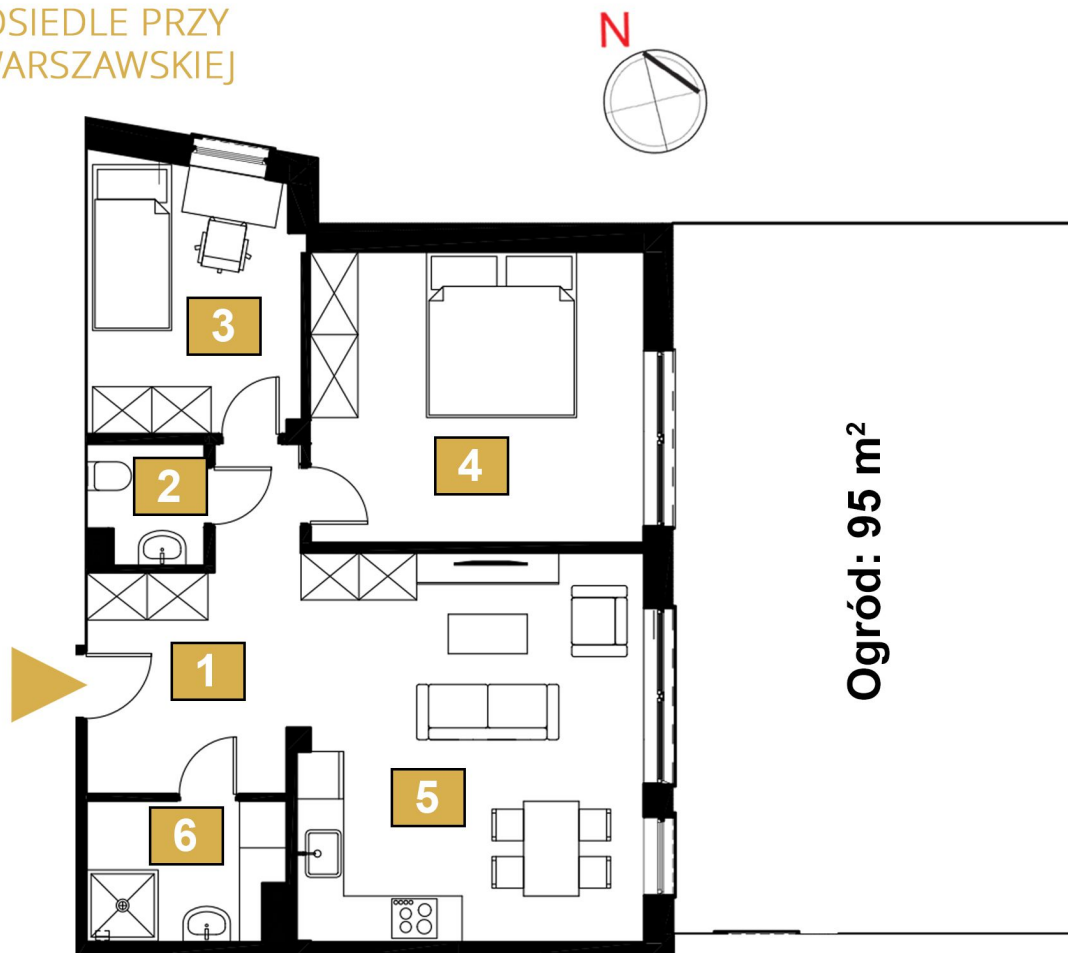




MONUMENT
DEVELOPMENT

OSIEDLE PRZY
WARSZAWSKIEJ



Ogród: 95 m²

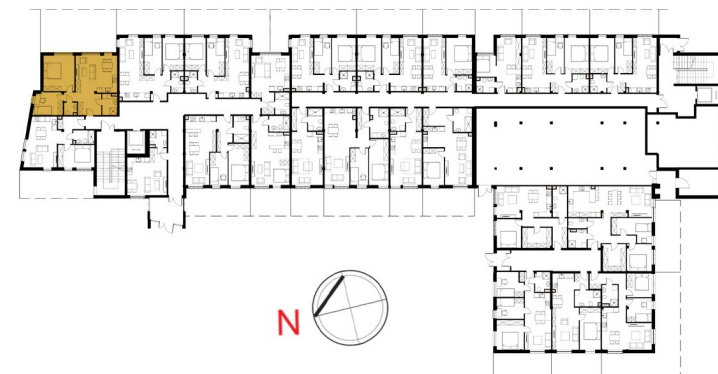
MIESZKANIE M2

PARTER




1. Komunikacja	9.0 m ²
2. WC	2.1 m ²
3. Pokój	8.9 m ²
4. Pokój	15.4 m ²
5. Salon z aneksem	21.4 m ²
6. łazienka	4.2 m ²

Powierzchnia całkowita 61.0 m²

Powierzchnia ogródka 95.0 m²



BIURO SPRZEDAŻY
ul. Rejtana 69
(Galeria E.Leclerc)
35 - 329 Rzeszów

 664 368 708
 biuro@monumentdevelopment.pl
 www.monumentdevelopment.pl